



Hall Technologies • 1234 Lakeshore Dr Suite #150 Coppell, TX 75019 • halltechav.com

HT-ODYSSEY

BYOD Conference Speakerphone with Presentation and Wireless Casting

API Command List

Version: 1.0



COMMAND LIST TABLE OF CONTENTS

- Connecting to the HT-ODYSSEY..... 3
 - IP Address..... 3
 - Enabling Telent Client..... 3
 - Logging in Via Command Prompt 4
- Terminology & API Commands Overview 5
 - Terminology 5
 - API Commands Overview..... 5
- API Commands 6
 - gbconfig Commands 6
 - gbcontrol Commands..... 8
 - Events 9

Connecting to the HT-ODYSSEY

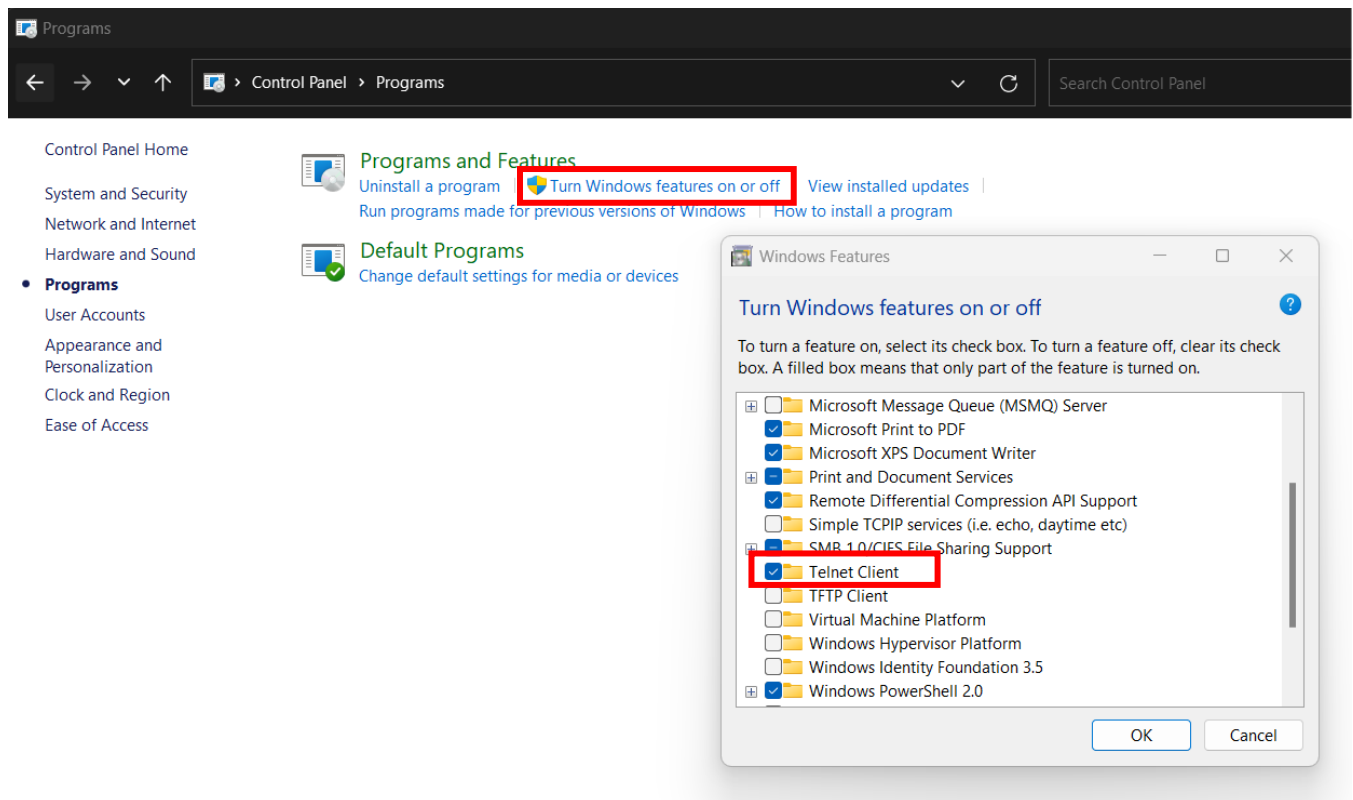
IP ADDRESS

To connect to and communicate with the HT-ODYSSEY, the controlling device needs to be on the same network. If needed, change the IP address on your PC to be in the same IP range and same subnet as the HT-ODYSSEY. You can find out the IP address of the HT-ODYSSEY by looking in the bottom right corner of the Guide Screen (you will need to connect the HT-ODYSSEY to a display).

ENABLING TELNET CLIENT

Before logging in to IP controller via command-line interface, make sure that Telnet Client is enabled. By default, Telnet Client is disabled in Windows OS. To turn on Telnet Client, do as follows.

1. Choose **Start > Control Panel > Programs**
2. In the **Programs and Features** area, click **Turn Windows features on or off**.
3. In the **Windows Features** window, select **Telnet Client** check box.



LOGGING IN VIA COMMAND-LINE INTERFACE

1. Choose **Start > Run**
2. In the Run dialog box, enter **cmd** and then click **OK**.
3. Enter **telnet 192.168.0.109 23** if the device's IP address is 192.168.0.109 and then press **Enter**. (The 23 on the end changes the port communication to 23).

```
E:\Users\Hornet>telnet 192.168.0.109 24
```

4. The device will display a **#** as the command prompt. The device is now ready to execute the API commands.

```
username:admin
password:
Welcome to HT-Odyssey.
~ # |
```

Terminology & API Commands Overview

TERMINOLOGY

The terminology used in the API command's description is listed as follows:

- **Device:** the unit being controlled
- **AirPlay Mirroring:** A screen mirroring approach developed by Apple and is supported by many Apple devices such as MacBooks, iPads, and iPhones.
- **Miracast:** A screen mirroring approach developed by Wi-Fi alliance and is supported by all Android devices and Windows PCs.
- **BYOD Source:** AirPlay and Miracast are BYOD solutions.
- **Hardware Source:** The physical hardware interface on the device, such as HDMI or USB Type-C.
- **Software Source:** Certain devices can display video content from a USB camera.

API COMMANDS OVERVIEW

API commands are mainly classified into the following types.

- `gbconfig`: manages the configurations of the device
- `gbcontrol`: controls the device
- `gblayout`: adjusts the features related to the screen layout
- **Event:** message from the device to report that the device's state changed

Command syntax uses the command type followed by a space, two dashes, and then the command plus the argument (as needed). For example:

`gbconfig --camera-mode normal`

Type	Space	dash dash	Command	Space	Argument
<code>gbconfig</code>		<code>--</code>	<code>camera-mode</code>		<code>normal</code>

This example changes the device's configuration to be "normal" for the mode of the camera.

Note: For the "show" command there is only a single dash: `gbconfig -s camera-mode`

API Commands

GBCONFIG COMMANDS

Command	Argument(s)	Description
<code>gbconfig --help</code>	-	Displays a list of all available gbconfig commands.
<code>gbconfig --name</code>	<i>{DeviceName}</i>	Configure the device's name. The new name will appear on the top-right corner of the screen. The default device name is HT-ODYSSEY. Note: The device name must be 1~20 characters in length and can include only letters, numbers and two special characters ('_' and '-').
<code>gbconfig --lan-info</code>	<i>{dhcp static ipaddr netmask gateway [DNS]}</i>	Sets the IP mode and, if changed to Static, changes the IP address, subnet mask, and gateway.
<code>gbconfig --wifi-mode</code>	<i>{2 5} {Channel auto}</i>	Configure the radio band and channel used by the Wi-Fi module. The first argument designates the band: 2 = 2.4G, 5 = 5G. The second argument designates the channel. 2.4G: 1~11, auto 5G: 36, 40, 44, 48, 149, 153, 157, 161, auto
<code>gbconfig --softap-enable</code>	<i>{y n}</i>	Enables (y) and disables (n) the Soft AP.
<code>gbconfig --softap-router</code>	<i>{y n}</i>	Enables (y) and disables (n) the soft router. With the Soft AP enabled, this command launches a built-in NAT module which allows a device connected to the Soft AP to access the LAN/WAN.
<code>gbconfig --softap-password</code>	<i>{Password}</i>	Sets the password for the Soft AP. Default password is 12345678. Note: The device name must be 1~20 characters in length and can include only letters, numbers and two special characters ('_' and '-').
<code>gbconfig --byod-enable</code>	<i>{y n} [runtimeonly]</i>	The Airplay Mirroring and Miracast feature is enabled (y) and disabled (n) and the device enters full or split screen. To disable it temporarily, add "runtimeonly" to the command. After the device reboots or goes into standby mode it will return to enabled.
<code>gbconfig --access-code</code>	<i>{AccessCode Auto}</i>	Sets the access code for BYOD access. Code must be 4 digits. If the code is entered without an argument the access code will be cleared out.
<code>gbconfig --rs232-param</code>	<i>{baud rate} {data bits} {parity} {stop bits}</i>	Used to configure the communication settings of the RS232 port. The command includes baud rate, data bits, parity,

Command	Argument(s)	Description
		and stop bits. Example: 9600-8n1
gbconfig --rs232-hex-cmd-enable	<i>{y n}</i>	Changes the command string format between printable (n) and hexadecimal (y).
gbconfig --rs232-sinkpoweron-cmd	<i>{PowerOnCmd}</i>	Enter the command string for powering on an external display with RS-232.
gbconfig --rs232-sinkpoweroff-cmd	<i>{PowerOffCmd}</i>	Enter the command string for powering off an external display with RS-232.
gbconfig --cec-cmd	<i>{hdmi hdbt} {on off} {CmdStr}</i>	Enter the CEC command string for powering on/off an external display. The first argument designates the output port. The second argument designates the action type.
gbconfig --standby	<i>{on off}</i>	Puts the device into standby mode (on) or takes it out of standby mode (off).
gbconfig --auto-standby-time	<i>{0 ~ 30}</i>	Sets the standby time, in minutes. A standby time of zero disables standby timeout. Default timeout is 1 minute.
gbconfig --output-resolution	<i>{auto timing}</i>	Changes the output resolution. Default is set to auto. Timing: 3840x2160P@30 1920x1080P@60 1920x1080P@30 1920x1200P@60 1680x1050P@60 1600x1200P@60 1440x900P@60 1366x768P@60 1280x1024P@60 1280x800P@60 1280x720P@60 1024x768P@60 800x600P@60 720x480P@60 640x480P@60
gbconfig --hdbp-enable	<i>{hdmi hdbt} {follow hdcpl4}</i>	Configure whether the HDCP feature of HDMI out interface is enabled. Default HDCP is enabled on HDMI out.
gbconfig --media-source alias	<i>{VideoName} {Alias}</i>	Assign or modify the alias of a video source. The first argument is the name of the video source. The second argument is the alias of the name. VideoName options are: Type-C, HDMI1, HDMI2. (HDMI1 = USB 3.0, HDMI2 = HDMI input)
gbconfig --media-source list	-	Lists all video sources and its alias. If there is no alias, the source will not be shown on the list.
gbconfig --media-source del	<i>{VideoName all}</i>	Deletes the selected video source, or all video sources if all is selected.
gbconfig --usb-scenario	<i>{byod zoom-room}</i>	Configure the USB scenario.
gbconfig --button-lock-mode	<i>{y n}</i>	Enables (y) or disables (n) the device key lock mode. When enabled, the LED will flash red twice. When disabled the LED will flash blue twice.
gbconfig --video-switch	<i>{hdmi type-c}</i>	Switches the source between HDMI IN and Type-C IN
gbconfig --show-guide-ip	<i>{y n}</i>	Enables (y) or disables (n) the IP address being shown on the Guide Screen.

Command	Argument(s)	Description
<code>gbconfig --input-edid</code>	<i>{4K@30 1080P@60 1920x1200@60 720P@60}</i>	Configure the input EDID.
<code>gbconfig --show</code>	<i>{name output-resolution lan-info hdcpc-enable auto-standby-time}</i>	Query the settings of a configuration item.

GBCONTROL COMMANDS

Command	Argument(s)	Description
<code>gbcontrol --help</code>		Displays a list of all available gbcontrol commands.
<code>gbconfig --reboot</code>		Reboots the device.
<code>gbcontrol --reset-to-default</code>		Restores the device to the factory defaults.
<code>gbcontrol --upgrade-firmware</code>	<i>{OtaPackagePath}</i>	Upgrade the device's firmware with the OTA package.
<code>gbcontrol --sinkpower</code>	<i>{on off}</i>	The sink device switches to or awakens from standby mode. The CEC command for powering on/off the display is also sent.
<code>gbcontrol --send-cmd</code>	<i>{hdmi hdbt} {CmdStr}</i>	Used to send custom CEC commands. The first argument designates the output port. The second argument is the command string in a blank hexadecimal format.
<code>gbcontrol --serial</code>	<i>[-b param] [-r {on off}] [-h {on off}] [-t timeout] {CmdStr}</i>	Send a command string through the RS232 port. <ul style="list-style-type: none"> • -b param: used to set the RS232 port work mode with contains baud rate, data bits, parity, and stop bits. By default 9600-8n1 is used. • -r {on off}: used to set whether to add a carriage return at the end of the string. Default is off. • -h {on off}: used to set whether to send the command string in hexadecimal format. Default is off. • -t timeout: used to designate the timeout in which this command will return.
<code>gbcontrol --show-osd</code>		Displays the OSD for ten seconds.
<code>gbcontrol --device-info</code>		Displays information about the device.

EVENTS

Events are not API commands that can be sent by the controller. These are messages sent by the device to announce that a certain state of the device has change.

Command	Description
[Event] VideoSource VideoName	This message means that the state of one video source has changed.
[Event] WorkMode	This message means that the device's work mode has changed.
[Event] Layout	This message means that the screen layout has changed and includes the layout ID and its name.



© Copyright 2022. Hall Technologies
All rights reserved.

1234 Lakeshore Drive, Coppell, TX 75019
halltechav.com / support@halltechav.com
(714)641-6607