

HDMI AUDIO EXTRACTOR WITH EDID MGMT



EMX-HD-AUD

- Extracts both analog and digital audio
- Pass-through EDID or learn and emulate custom files
- Powered from HDMI input or included power supply
- Re-clocks HDMI and buffers DDC (resolves EDID and HDCP issues)
- Extends and surge protects HDMI signal
- Supports DVI, HDMI™, Deep-Color & 3D Video

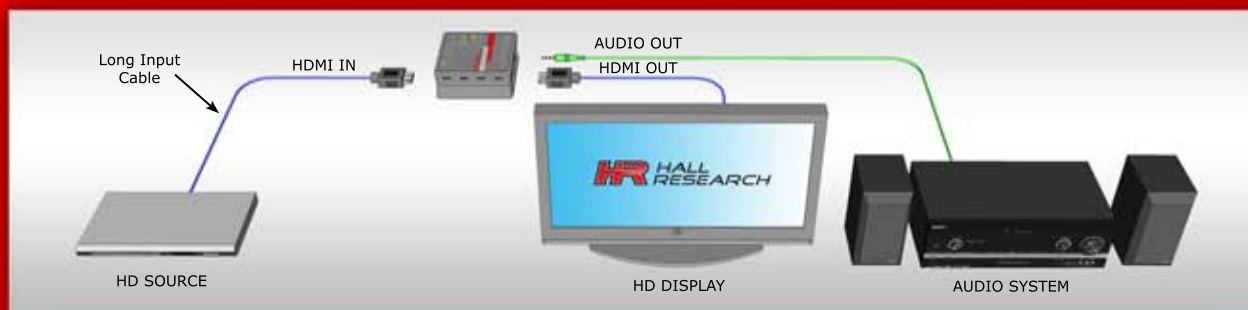


The Model EMX-HD-AUD is an audio extractor for HDMI with EDID management, cable equalization, AV status indication, and USB port for connection to a PC. This versatile device can be used to extract digital and analog audio from HDMI, extend HDMI cable length, pass-thru or learn EDID from any display, and re-clock both TMDS video and DDC data. The EMX-HD-AUD resolves many system level HDMI signal-chain issues by acting as an intelligent intermediary allowing incompatible components to function properly.

The EMX-HD-AUD is powered from the HDMI source input and no additional power supply connection is needed. A USB power supply is included in case the HDMI source has limited power.

The EMX-HD-AUD may also be used to diagnose and analyze HDMI problems. Multi-color LED's on the unit indicate EDID routing and provide real-time indication of the HDMI video and audio types. The audio outputs include both analog and multi-channel digital TOSLINK. Each of the audio outputs can be independently muted, including the audio in the HDMI output (desirable if the connected TV's audio is causing annoying echo).

The EMX-HD-AUD constructs an EDID table (capabilities list) for the source either from internal memory or from the connected output. The internal EDID data can be "learned" from the output, or uploaded from a PC via USB port using free Windows™ PC software.



CONTROL

SCALE

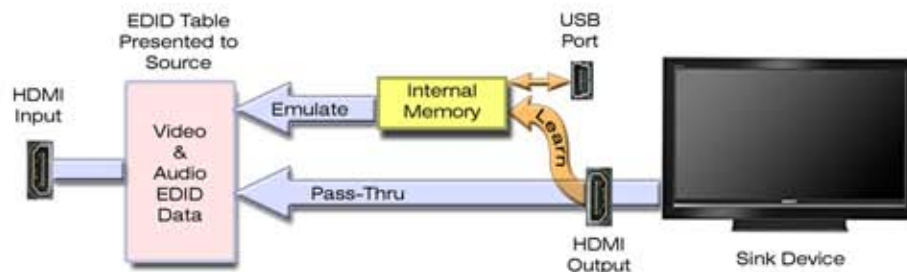
EXTEND

SWITCH

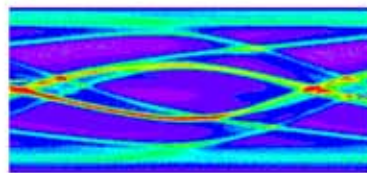
SPLIT

SPECIFICATIONS

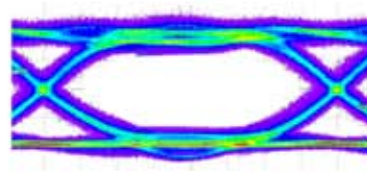
Supported Video Formats -----	DVI 1.0, HDMI 1.4, HDCP 1.0
USB -----	2.0 Full Speed
Power Supply -----	5V DC, 1A
	90-264 VAC, 47-63 Hz
Dimensions -----	2.71" (W) x 2.825" (D) x 1.25" (H)
	68.83 mm x 71.76 mm x 31.75 mm
Weight -----	1 lb (0.453 kg)
Operating Temp -----	32 to 122 °F (0 to 50 °C)
Storage Temp -----	40 to 185 °F (-40 to 85 °C)
Humidity -----	10 - 90% non-condensing
Cooling -----	Convection
Enclosure -----	Black Plastic ABS-94VO, UL File #56070
Vibration -----	ISTA 1A in carton
EMI/EMC -----	CE, FCC Class A
MTBF -----	145,000 hours



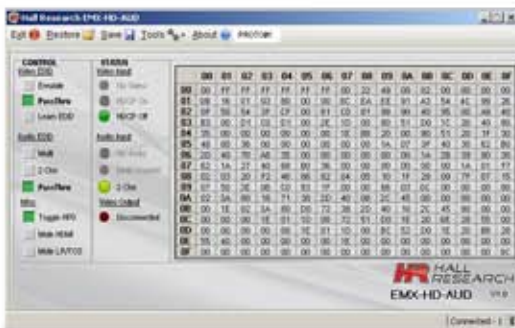
EDID Routing Diagram



TMDS Signal at end of long Cable



TMDS Signal after Equalization



Hall Research EMX-HD-AUD GUI / Uploader



EDID Editor Software