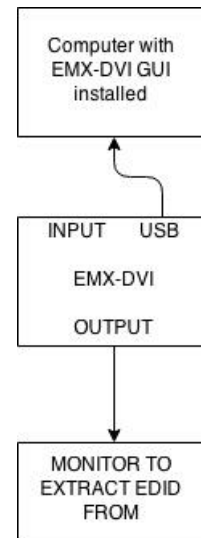
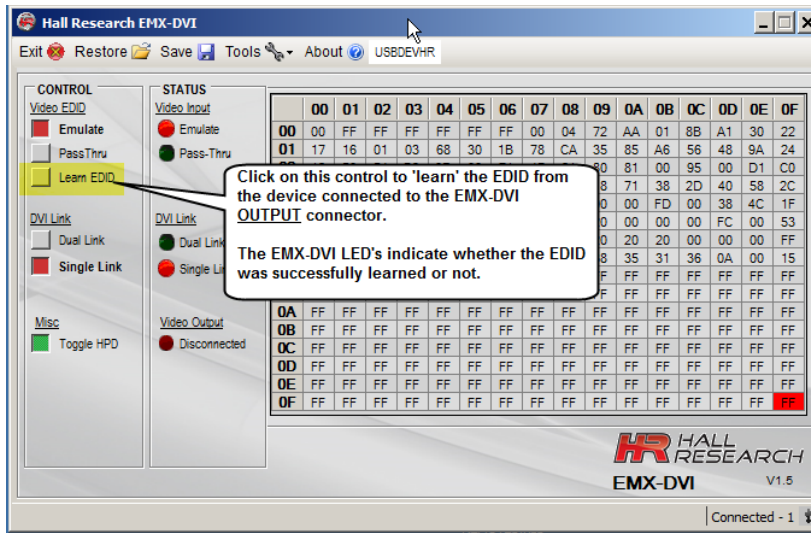


LEARNING the EDID of a Device

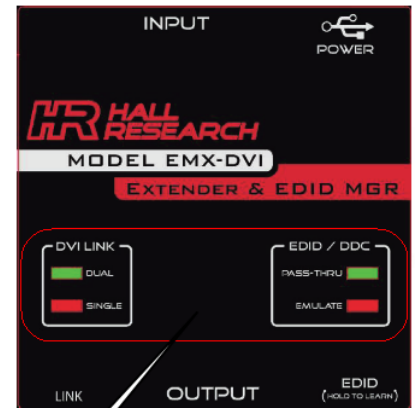
1. Connect the USB-EDID-PRO2 to the device to extract the EDID from as shown below.
2. If not previously done, Install and run the EMX-DVI GUI with EMX-DVI device connected to the computer via USB cable.
3. Learn the Monitors EDID by following one of the two methods listed below:
 - a. Click the 'LEARN' button on the EMX-DVI GUI (see GUI screenshot) or
 - b. **Press and Hold** for 3-4 seconds the 'LEARN' button on the EMX-DVI unit and wait for the EMULATE LED to begin blinking. Then release the 'LEARN' button

PRESS & HOLD TO LEARN EDID



4. After using one of the methods in Step 3 above, observe the LEDs on the EMX-DVI.
 - a. If the EDID was successfully read, ALL the LEDs on the EMX-DVI will rotate in a circular pattern
 - b. If the EDID was NOT successfully read, ONLY the 'PASS-THRU' and 'EMULATE' LEDs will alternatively flash. (Both DVI LINK LEDs will be OFF).

Note: You can not 'LEARN' an invalid EDID, but you can IMPORT any 256 byte block of data desired via the GUI 'Tools' IMPORT DATA option.



These LED's indicate the success or failure of learning the EDID.
SUCCESS - All LED's rotate in a circular pattern
FAILURE - Pass-Thru and Emulate LEDs

Writing the EDID to a Device

1. Connect the USB-EDID-PRO2 to the device to write the EDID to as shown below.
2. If not previously done, Install and run the EMX-DVI GUI with EMX-DVI device connected to the computer via USB cable.
3. Click on the GUI 'Tools' Menu and select the 'Write EDID' option. A message is displayed. The user must confirm the operation by clicking the YES button to perform the EDID write operation. The operation is aborted if the user clicks NO (or just presses ENTER).



The EDID written to the attached device is whatever information currently resides inside the EMX-DVI device, whatever information that may be.

Select 'Write EDID' option from Tools Menu

Writes the current EDID into the device connected the EMX-DVI OUTPUT connector. The user must confirm the operation.

Write current EDID to output device

Computer with EMX-DVI GUI installed

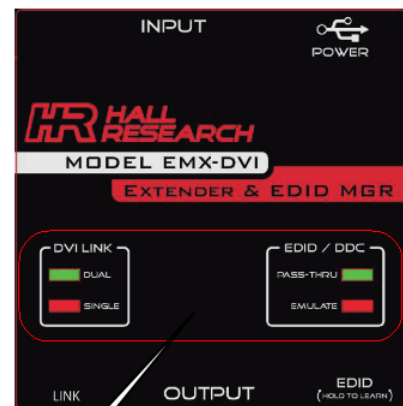
INPUT USB

EMX-DVI

OUTPUT

Device to Write EDID into

4. After using one of the methods in Step 3 above, observe the LEDs on the EMX-DVI.
 - a. If the EDID was successfully written, ALL the LEDs on the EMX-DVI will rotate in a circular pattern
 - b. If the EDID was NOT successfully written, ONLY the 'PASS-THRU' and 'EMULATE' LEDs will alternatively flash. (Both DVI LINK LEDs will be OFF)



These LED's indicate the success or failure of writing the EDID.

SUCCESS - All LED's rotate in a circular pattern

FAILURE - Pass-Thru and Emulate LEDs