



Hall Technologies • 1234 Lakeshore Dr Suite #150 Coppell, TX 75019 • halltechav.com

HD-AUD-IO

HDMI 2.0 Audio Inserter & Extractor

USER MANUAL

October 6, 2023



RoHS
Compliant



Important Safety Instructions



1. Do not expose this apparatus to rain, moisture, dripping or splashing and that no objects filled with liquids, such as vases, shall be placed on the apparatus.



2. Do not install or place this unit in a bookcase, built-in cabinet or in another confined space. Ensure the unit is well ventilated.



3. To prevent risk of electric shock or fire hazard due to overheating, do not obstruct the unit's ventilation openings with newspapers, tablecloths, curtains, and similar items.



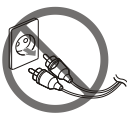
4. Do not install near any heat sources such as radiators, heat registers, stoves, or other apparatus (including amplifiers) that produce heat.



5. Do not place sources of naked flames, such as lighted candles, on the unit.



6. Clean this apparatus only with dry cloth.



7. Unplug this apparatus during lightning storms or when unused for long periods of time.



8. Protect the power cord from being walked on or pinched particularly at plugs.



9. Only use attachments / accessories specified by the manufacturer.

Table of Contents

- Introduction 4
 - Overview 4
 - Features..... 5
- Package Contents 5
- Setup 6
 - Installation..... 6
- Connectors and Indicators 7
- RS-232 Commands 9
- Windows Graphical User Interface..... 11
- Troubleshooting 14
- Specifications 15

Introduction

OVERVIEW

The Hall Technologies HD-AUD-IO is an all-in-one HDMI audio manager capable of extracting audio from (de-embedding) and inserting audio into (embedding) an HDMI video signal. The product also provides EDID management features.

The product provides one HDMI input with a corresponding HDMI output. The HDMI input audio signal simultaneously extracts to both 2-channel L/R analog and Digital SPDIF (TOSLINK).

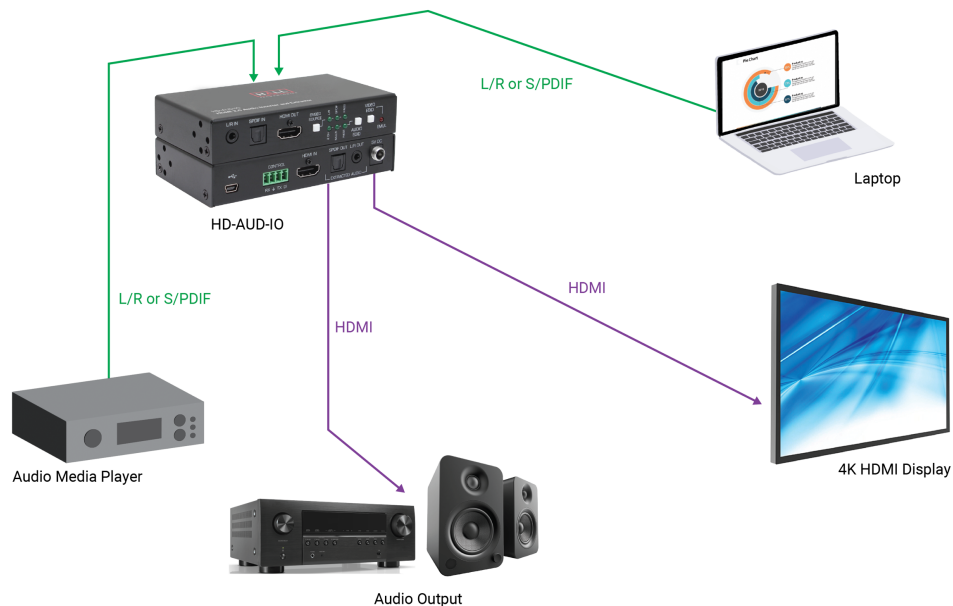
The product provides two audio inputs (analog and digital). Users can select which audio to embed in the HDMI output. It can be the same as the original HDMI audio (pass-thru), SPDIF digital, or 3.5mm L/R analog.

Advanced EDID management allows users to control the video portion as well as the audio part of the EDID. The EDID presented to the video source connected to the HDMI input can pass from the downstream device or emulate an EDID from internal memory. The device can also “Learn” the EDID connected to its HDMI output.

The product has a video bandwidth of 18 Gbps and supports resolutions up to 4K @ 60 Hz 4:4:4 with HDR. It supports HDCP 2.2 as well as HDCP 1.4 if needed.

The device has the ability to generate and output a blank HDMI signal with audio embedded even if there is no HDMI input; often referred to as “HDMI Audio Bridging”. This is a convenient means to distribute audio only signals over an HDMI network.

The HD-AUD-IO has a configurable digital input terminal that can mute the audio and/or video.



FEATURES

- Supports 4K/60 4:4:4, HDR, HDCP 2.2 & 1.4
- 18 Gbps bandwidth for compatibility with both HDMI 1.4 and 2.0b
- Supports multi-channel digital and 2-channel analog audio
- Extracts both LR analog and digital audio embedded in the HDMI input
- Embeds either LR analog or digital audio into the HDMI output
- Generates HDMI output with embedded audio with no HDMI input
- EDID management
- Can pass-thru or emulate EDID
- RS-232 controllable
- Configurable digital input for muting audio and/or video

Package Contents

- 1x Model HD-AUD-IO
- 2x Rack mounting brackets
- 1x 4 position terminal block
- 1x 5 Volt power supply with locking connector
- 4x Power supply plug universal adapters
- 1x Web documentation card



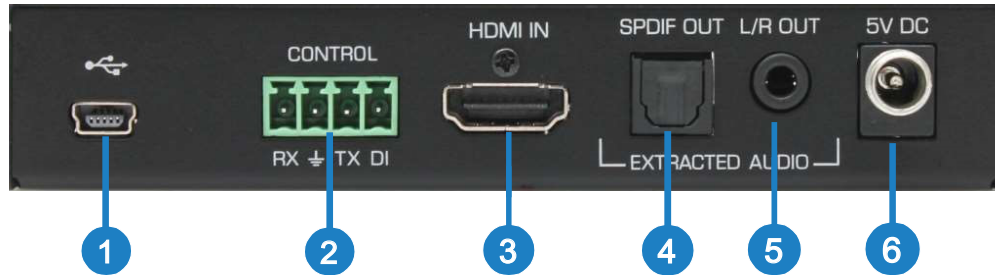
Setup

Installation

- **Optionally**, connect an HDMI source to the HDMI IN connector. Note that a source is NOT required to embed audio onto the HDMI output.
 - If there is no HDMI source signal, the HDMI Output will be a 640x480 (480P) black screen.
- **Optionally**, connect an HDMI compatible sink to the HDMI OUT connector. A sink is not required to extract the HDMI Input Audio.
- **Optionally**, connect the SPDIF OUT audio output to a compatible audio device.
Optionally, connect the L/R OUT analog audio output to a compatible device (e.g., headphones, assistive listening devices).
- **Optionally**, connect the audio to embed to the SPDIF IN and/or L/R IN connector(s).
- **Optionally**, Connect the TX, RX and GND contacts on the Control terminal strip to a compatible controller (e.g., PC or RS-232 controller).
- **Optionally**, Connect the DI contact on the Control terminal strip to a compatible normally open dry contact. This can be configured to mute the audio and/or video. Factory default is to mute the audio output. (Closed = MUTE)
- **Optionally**, use the included rack mount brackets and hardware. The brackets are configurable for different mounting orientations.
- Connect the included power supply to the 5V DC connector.

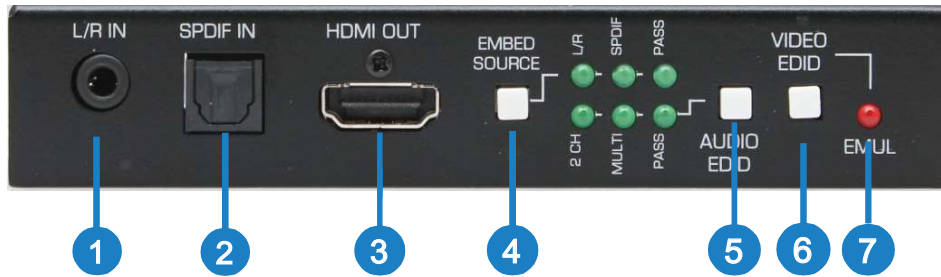
Connectors & Indicators

HD-AUD-IO Front



No.	Name	Description
1	Mini-USB Port	Used by Windows GUI and to update system firmware.
2	CONTROL Terminal Strip	a. RX, GND and TX - RS-232 Port: Connect to an external RS-232 controller to control the HD-AUD-IO. b. Digital Input: Connect to an external control for system output muting control based on the configured 'Digital Input Action'.
3	HDMI In	Connect to a compatible HDMI Source
4	EXTRACTED AUDIO - SPDIF Out	Connect to other compatible digital audio equipment.
5	EXTRACTED AUDIO - L/R Out	Connect to other compatible line-level audio equipment.
6	5VDC	Connect to the included power supply.

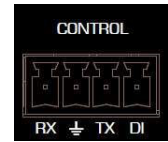
HD-AUD-IO Back



No.	Name	Description
1	AUDIO TO EMBED - L/R IN	Connect to compatible line-level audio source
2	AUDIO to EMBED - SPDIF IN	Connect to compatible digital audio source
3	HDMI OUT	Connect to a compatible HDMI SINK
4	EMBED SOURCE Button and LEDs	<ul style="list-style-type: none"> a. L/R - Audio on HDMI OUT connector comes from L/R IN connector b. SPDIF - Audio on HDMI OUT connector comes from SPDIF IN connector c. Pass - Audio on HDMI OUT connector comes from HDMI IN connector
5	AUDIO EDID Button and LEDs	<ul style="list-style-type: none"> a. 2 CH - Alters EDID to include only 2CH audio settings b. Multi- Alters EDID to include only Multi-Channel audio settings c. Pass - Pass EDID to source from SINK
6	VIDEO EDID Button	<ul style="list-style-type: none"> a. Single button press (~1 sec) - Toggle between EMULATED and PASSTHRU EDID modes b. 1 Blink - HOLD FOR 3 SECS - LEARN EDID c. 2 Blinks -HOLD FOR 7 SECS - FACTORY DEFAULT
7	VIDEO EDID LED	<ul style="list-style-type: none"> a. OFF = PASS-THRU EDID b. ON = EMULATED EDID c. This LED blinks when VIDEO EDID button is pressed AND HELD to show function selected when button is released.
8	EDID Handling	With no SINK attached to the HDMI OUT connector, the EDID presented to the SOURCE will be emulated from the current EDID stored in the system.

RS-232 commands

- The following table lists the available RS-232 commands:
 - A single carriage return character (hex 0x0D) terminates each command.
 - Invalid input, space and linefeed characters (hex 0x0A) are ignored.
- RS-232 communication on the RS-232 terminal strip is:
 - 115200 bps, 8 Bit, No Parity, 1 Stop bit.
- <CR> symbols in the table below refer to a single carriage return character (0x0D)
- "Invalid Command" is sent in response to invalid RS-232 commands.
- Other possible responses
 - "ERR1" - Internal I2C error
 - "ERR2" - TX HPD read error.
 - "ERR3" - Chip Signature error



Command	Response	Function and Example
FW	FWx.y<CR>	Returns the firmware version. FW1.1.<CR> -- X and Y represent the firmware version numbers. (V1.1)
CVx	CVx<CR>	Sets/Returns the HDMI Output video status CV?<CR> -- Returns the current HDMI Output video status CV1<CR> -- Enable HDMI Output video (Factory Default) CV0<CR> -- Disable HDMI Output video is OFF
DI	DIx<CR>	Returns Digital Input Status DI1<CR> -- Digital Input terminal is not grounded. DI0<CR> -- Digital Input terminal is grounded.
DIAx	DIAx<CR>	Sets/Returns Digital Input Action DIA?<CR> -- Returns current Digital Input Action DIA3<CR> -- HDMI Output Audio is muted when digital input is grounded. (Factory Default) Where 'x' is one of the following: 0-- No Action 1-- Mute HDMI Output Video and Audio 2-- Mute HDMI Output Video 3-- Mute HDMI Output Audio (Factory Default) 4-- Mute Both External SPDIF and L/R Outputs 5-- Mute External LR Output 6-- Mute External SPDIF Output 7-- Mute HDMI TX Output
ESx	ESx<CR>	Sets/Returns the current EDID setting ES?<CR> -- Returns the current EDID setting ES1<CR>-- Pass-Thru EDID (Factory Default) ES0<CR> -- Emulated EDID
EL	EL OK<CR> EL ERR<CR>	Learns the connected SINK to the selected EDID (LR or Multi) EL OK<CR> -- The EDID learning process was completed EL ERR<CR> -- The EDID learning process was not completed. Failures can occur from: No SINK attached Attempting to learn while in EMULATED EDID mode Attempting to learn while in AUDIO EDID Pass-Thru mode
FD	FD<CR>	Resets device to Factory Defaults Unit will reboot

HDI	HDIx<CR>	Returns HDMI Input HDCP status HDI?<CR> -- Returns the current HDMI Input HDCP Status HDI2<CR> -- HDMI Input is HDCP 2.2 encrypted HDI1<CR> -- HDMI Input is HDCP 1.4 encrypted HDI0<CR> -- HDMI Input is not encrypted
HDOx	HDOx<CR>	Returns the HDMI Output HDCP Mode HDO?<CR> -- Returns the current HDMI Output Mode HDO0 = HDCP Passthru HDO1 = HDCP 2.2 to 1.4
Command	Response	Function and Example
HI	HIx<CR>	Returns HDMI Input +5V Status. HI1<CR> -- Source +5V connected. HI0<CR> -- Source +5V disconnected.
HO	HOx	Returns HDMI Output HPD Status. HO1<CR> -- Sink HPD connected. HO0<CR> -- Sink HPD disconnected.
IAx	IAx<CR>	Sets/Returns the current Audio EDID Source IA?<CR> -- Returns the current Audio EDID Source IA2<CR> -- L/R IA1<CR> -- Multi-Channel IA0<CR> -- Pass-Thru (Factory Default)
MUTx	MUTx<CR>	Sets/Returns the current muting state MUT?<CR> -- Returns the current muting status Where 'x' is one of the following: 0-- No Muting (Factory Default) 1-- Mute HDMI Out Video and Audio 2-- Mute HDMI Out Video 3-- Mute HDMI Out Audio Both HDMI Out and Extracted HDMI Input if L/R or Multi 4-- Mute Both External SPDIF and L/R HDMI In Audio Out 5-- Mute External L/HDR HDMI In Audio Out 6-- Mute External SPDIF HDMI In Audio Out 7-- Mute HDMI TX Output
OAx	OAx<CR>	Sets/Returns the current HDMI Out Audio status (See MUT3 above) OA?<CR> -- Returns the current HDMI Output Audio Status OA1<CR> -- HDMI Out and Extracted HDMI In Audio is ON (Factory Default) OA0<CR> -- HDMI Out and Extracted HDMI In Audio is OFF Only affects audio in L/R or MULTI modes
SAx	SAx<CR>	Sets/Returns the current Embed Audio Source SA?<CR> -- Returns the current Embed Audio Source SA2<CR> -- L/R SA1<CR> -- Multi-Channel SA0<CR> -- Pass-Thru (Factory Default)
ST		Returns the current system status ST<CR> -- Returns the current system status
UPGRADE	One Moment...<CR> Run Firmware Upgrade tool now<CR>	Used to place system into the firmware upgrade mode.

Windows Graphical User Interface

The HD-AUD-IO is controllable via free Windows® based software available from the Hall Technologies website at:

<http://halltechav.com/product/HD-AUD-IO>

Software Installation Prerequisites

- A PC with Windows XP® OS or later
- USB port
- Microsoft® .NET Framework 2.0 or later (most recent OS including Windows 8 and later include this software and no action is required). If the .NET Framework 2.0 or later is not installed on your PC, the Microsoft™ website has free downloads available.

Software Installation

If an earlier version of this particular software was previously installed, UNINSTALL the program first from either the Add/Remove Programs section of the control panel or by running the previous installation's SETUP.EXE and selecting "remove application".

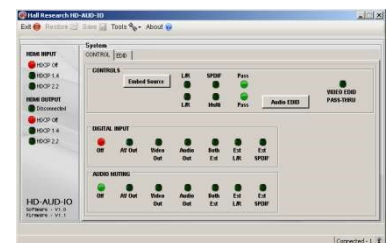
- Install the software by executing the SETUP.EXE program from the installation source directory
- Accept the default settings, but if you want to specify a particular installation directory other than the default, you may do so.
- Once the HD-AUD-IO software installation has completed, either click the desktop icon or navigate the Start Menu to

Start -> Programs -> Hall Research -> HD-AUD-IO

General

In most installations the use of the software GUI is not required as most functions can be performed using the front panel buttons on the product.

You can use the software to export EDID files from the device.



It is possible to connect more than one HD-AUD-IO to the PC (using several USB ports of the PC). The same software GUI detects all connected devices and allows control from the same application.

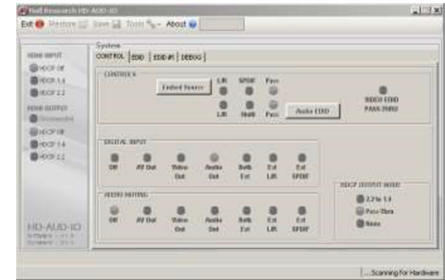
USB Device Detection

The HD-AUD-IO software uses standard Windows® drivers, which automatically configure the USB port after connection and do not require the installation of any special USB drivers.

The first time you connect the HD-AUD-IO to the PC, you may experience a short delay and a windows notification pop-up message may display.

- The software GUI scans the HD-AUD-IO settings continuously in real-time, all changes to the system are reflected in the software GUI.
- If no HD-AUD-IO device is attached to the system, the on-screen fields are disabled (grayed out).
- The new device detection and driver auto installation typically only occurs once. Thereafter, devices that are reconnected detect with no delay or message.


Only one instance of the software GUI can run at a time. Executing the application more than once will result in a warning message.



Tool Bar Menu

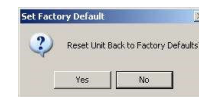
EXIT 
Exits the application



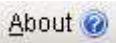
TOOLS 
Factory Defaults

Restore the device to factory default settings. The user must confirm the action.

Export EDID
Save the currently selected EDID as a 256-byte binary file.



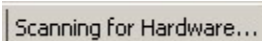
Firmware Update
Allows users to field upgrade the device application firmware. Application firmware that does not support this function will disable this option.

ABOUT 
Displays screen with software versions, website link, legal disclaimer and copyright information.



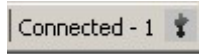
1.6. Status Bar

The bottom bar of the screen shows the current USB status as follows:

“Scanning for Hardware...” 

The GUI software is looking for HD-AUD-IO devices.
The screen controls are disabled until a HD-AUD-IO device attaches.

“Connected – XX”



Where XX is the number of HD-AUD-IO devices connected to the PC.

Controls

Embed Source

This button selects which audio source to embed; either 3.5mm L/R IN, SPDIF IN or HDMI IN.

Audio EDID

This button selects how the EDID is altered; either L/R (2 Channel), Multi (Multi-Channel) or Pass-Thru from the HDMI output.

Video EDID Emulate/Pass-Thru

Pressing this button quickly selects whether the EDID given to the source is from a previously stored EDID or from the HDMI OUT display.

Digital Input

This area controls and shows the desired mute setting which occurs when the DI (digital input) terminal connects to ground.

The indicator will be 'RED' when the DI is un-grounded and 'GREEN' when the DI input connects to ground.

The factory default setting is to mute only the HDMI audio output. Click the desired setting to change the factory default.

Setting	Functionality
OFF	No Audio or Video muting
AV Out	Both HDMI Audio and Video are muted. (Extracted HDMI Input audio is not affected)
Video Out	Only HDMI Video is muted
Audio Out	Only HDMI Audio is muted L/R and SPDIF audio modes, the extracted audio also mutes
Both Ext	Both L/R Out and SPDIF Out are muted HDMI Output audio is not affected
Ext L/R	Only L/R Out is muted HDMI Output audio is not affected
Ext SPDIF	Only SPDIF Out is muted HDMI Output audio is not affected

Audio Muting

This area controls and shows the current system muting state. This setting can be different from the setting above for when the Digital Input.

For example,

With 'Audio Muting' set for 'AV Out' (both Audio and Video muted) and the 'Digital Input' setting is set for 'Audio Out'.

When the Digital Input terminal connects to ground, the Audio and Video muting state shown in the 'Audio Muting' area will change from 'AV OUT' to 'AUDIO OUT'

Troubleshooting

If you are experiencing problems getting the system to work properly, please use the following troubleshooting suggestions.

- Ensure that all connections to the device are solid. Loose connections are the number one cause of issues.
- Try resetting the system by unplugging BOTH the power supply and HDMI IN connectors, waiting 5 seconds and plugging them back in.
 - The front panel LEDs cycle several times at power up; after ~15 seconds, audio and video should be passing through the device.
- Try restoring factory defaults using the front panel VIDEO EDID button (hold for 7 seconds) or via RS-232 command.
- Cycle the EDID mode with the front panel VIDEO EDID button.
- If you are having problems with 'muting' the AV output, ensure you have the correct mute settings.
 - The muting of video is normally done with a 'BLACK' screen (AVMUTE). If you need to have "NO HDMI" output, you will need to use the TX MUTE setting (DIA7 or MUT7).

Specifications

Video	
Standards	DVI (single Link) HDMI 1.4 and HDMI 2.0b video specifications including 12 bit color depth, 3D video HDCP 2.2
Connectors	HD-AUD-IO (1) HDMI Input (1) HDMI Output
Resolutions	DVI signal VGA (640x480) thru WUXGA (1920x1200) HDTV signal 480p through 4K 60 Hz 4:4:4

Audio	
Formats	LPCM 2CH Audio (32, 44.1 and 48 KHz sample rate) Digital Audio multi-channel 2.1, 5.1, 7.1

Other Signals	
RS-232	(1) RX, TX and GND on Terminal Strip RS-232 Baud Rate: 115200, N, 8, 1
Digital Input	Dry Contact, connect to ground to trigger configured action

General	
Power Supply	100 VAC to 240 VAC, 47-63 Hz, External; 5 VDC 1.0 ADC
Temp/humidity	Storage: -40 to +158 °F (-40 to +70 °C) / 10% to 90%, non-condensing Operating: +32 to +122 °F (0 to +50 °C) / 10% to 90%, non-condensing
Current Draw	@5 VDC - 85 mADC (typical), 200 mADC (fully loaded)
Cooling	Convection
Enclosure Type	Metal (steel)
Dimensions	0.9"Hx4.47"Wx2.53"D (23 mm H x 114 mm W x 64 mm D)
Shipping	4.0"Hx10.0"Wx8"D (101.6 mm H x 254 mm W x 203.2 mm D)
Product Weight	Model Only HD-AUD-IO - 0.5 lb (0.227 Kg) Shipping HD-AUD-IO - 1.6 lb (0.726 Kg)
Safety	CE
EMI/EMC	CE, FCC Class A
MTBF	90,000 hours (estimate)
Warranty	3 years parts and labor



© Copyright 2023. Hall Technologies
All rights reserved.

1234 Lakeshore Drive, Coppell, TX 75019
halltechav.com / support@halltechav.com
(800)-959-6439